

COMPANY
PROFILE
2023

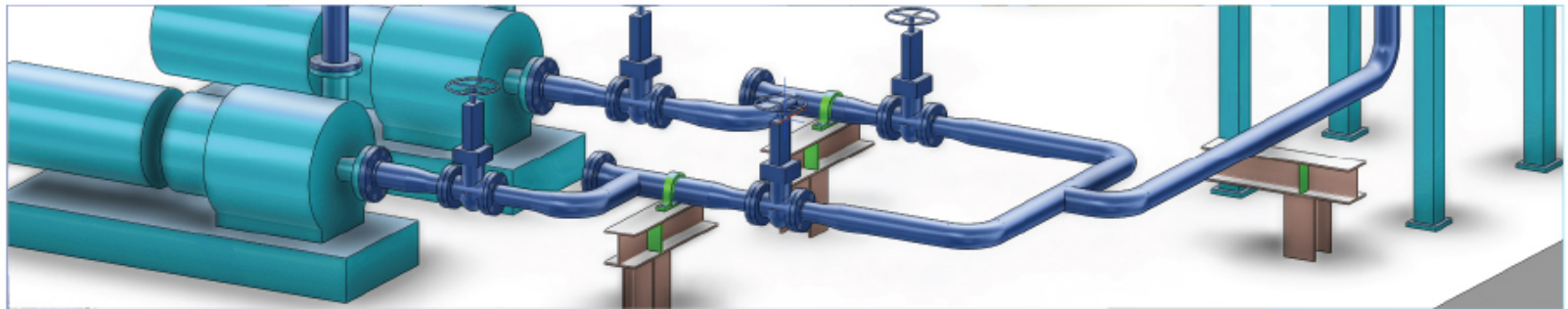
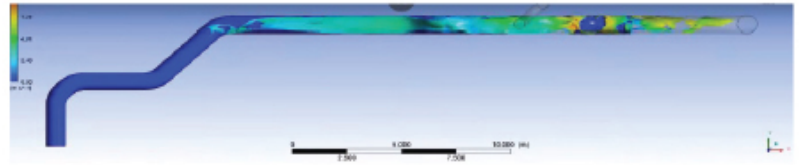
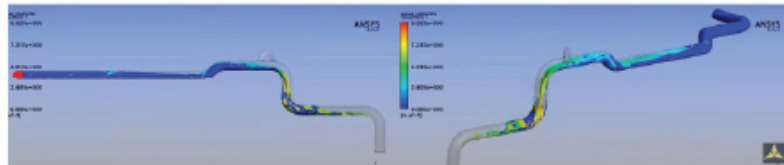


TRIPLE A
ENGINEERING SERVICES



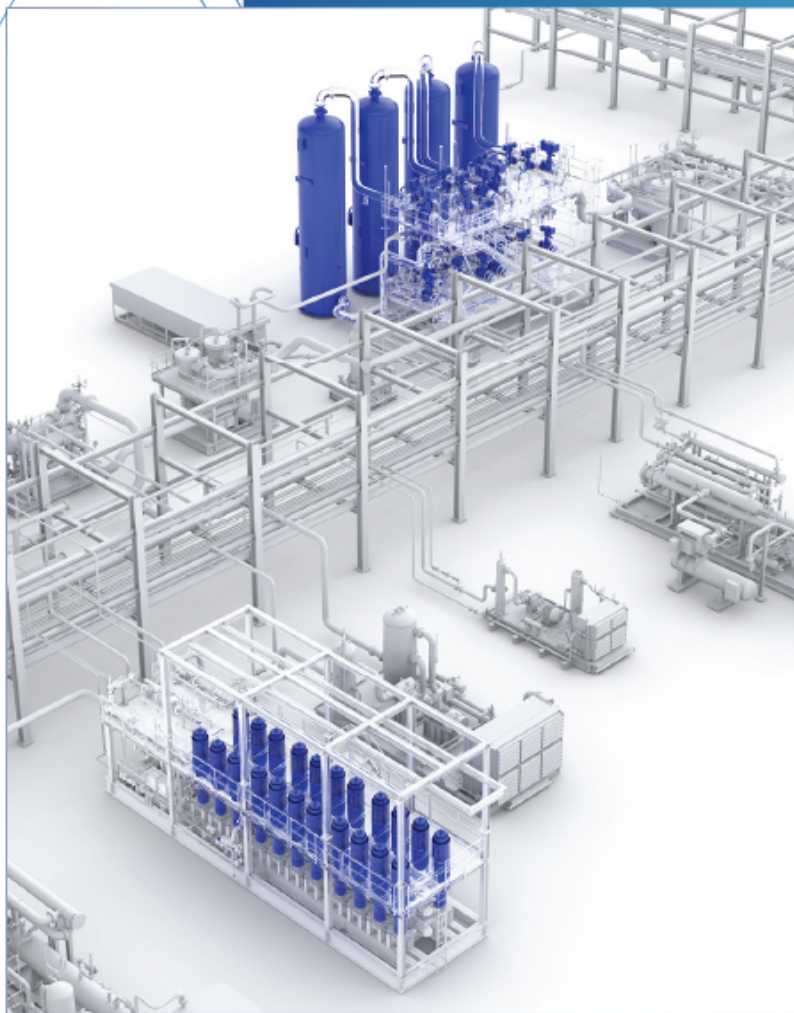
PIPING DESIGN

- **Piping Specifications.**
- **Preparation of Project Plot Plan.**
- **3D Modeling** Using Isometric and Shop Drawings.
- **Piping Bill of Quantities.**
- **Stress Analysis** Using CAESARII Software.
- **Pipe Support/Hanger Design and Detailing.**
- **CDF Simulation** and finite ELEMENT THROUGH ANSYS SOFTWARE, Piping & Instrumentation Diagrams (P&IDs).



MECHANICAL SYSTEMS DESIGN

- **Equipment** / System Sizing Calculations. Systems Design Review .
- **Process** Flow Diagrams (PFD's) .
- **Wastewater** treatment systems of all types MBBR, MBR, FBR and recycling for multiple use according to the laws .
- **Mechanical** Equipment / Systems BOQ's & Technical .
- **Mechanical** Lists (Line, Valve, Instruments) .
- **Design for pressure** vessel and tanks according to ASME SEC VIII Division 1 and API 650 .

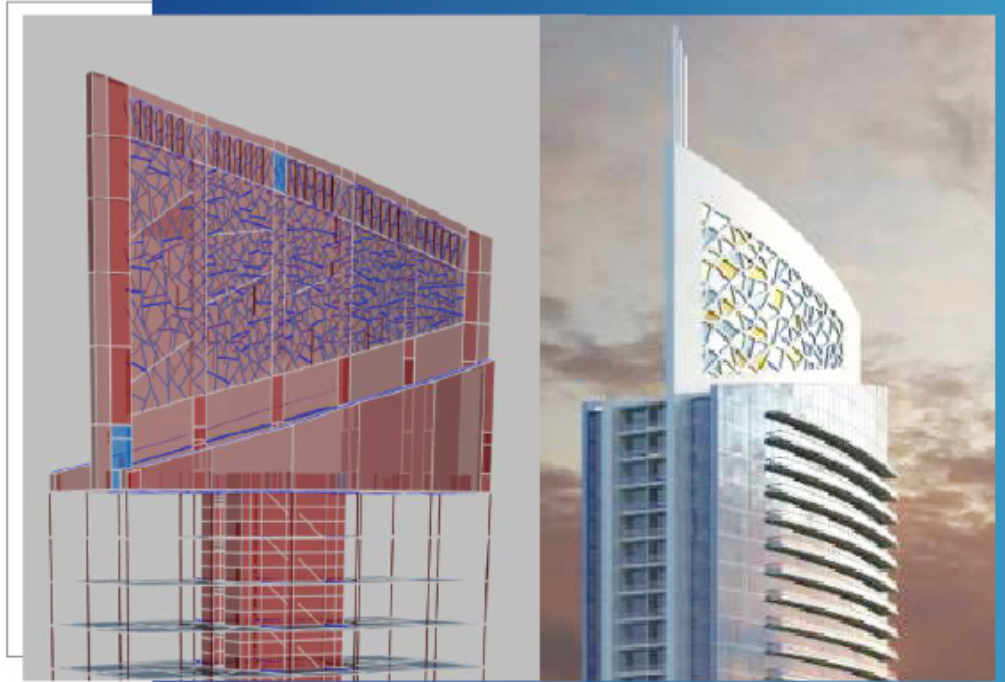


PROCUREMENT MANAGEMENT

- Preparation of Tender Documents.
- Preparation of list of suppliers.
- Floating Tenders and Receiving offers.
- Price estimation and vendor negotiation.
- Preparation of Evaluation Report.

CIVIL & STRUCTURAL DESIGN

- Foundation Design for Rotary and Static equipment.
- Piling Design.
- Concrete & Steel Design for Buildings.
- Concrete Design for Water Structure.
- Structural Steel Design for Pipe racks, supports, Hangers, Shades...etc.
- Structure 3D Modeling using Plant 3D .
- Structural Analysis using STAAD Pro.
- Structural Detailing using Advance Steel and TEKLA Software.
- Structure and Foundation Bill of Quantities & Specifications.



TITLING IN CONCERT

BASE OF THREE SODA TANKS

OUR GOAL

- Remove three Tanks with diameter 5m and height 7m with two cranes 100 Ton, 25 Ton according to Osha standards and owner standard
- Maintenance the three tanks according API 650 Code
- Demolish the old concert base and pouring new ones
- Reinstall the tanks



BEFORE :





WHAT WE DO ?

- Prepare risk assessment, method of statement how to uninstall with caustic soda piping, valves and pumps without flushing system .
- Uninstall all piping, valves, pumps, monkey ladder, handrail and Platform from three tanks .
- Layout for the area with all expected problems (elect lines underground, waterlines....etc.).
- Prepare risk assessment, method of statement and lifting plan documentation under supervision of Tuv.nord consultant .
- Prepare pad eye design and calculation sheet .
- Prepare gannet chart ,WPS, PQR ,welder certificate ,P&ID for the newlines under supervision of mechanical consultant .
- Prepare all civil drawing for the two new concrete bases , drainage grill and drainage room under supervision of civil consultant .

AFTER :





FINANCIAL MANAGEMENT

- Establishing companies,
- Feasibility studies,
- Accounting and auditing works,
- Tax and insurance experts
- Procedures for dealing with government agencies and trademark registration

A composite image featuring a city skyline, a construction crane, an airplane, a person in a blue hard hat, and a hand holding rolled-up blueprints. The text "OUR PROJECTS" is overlaid in the center.

OUR PROJECTS

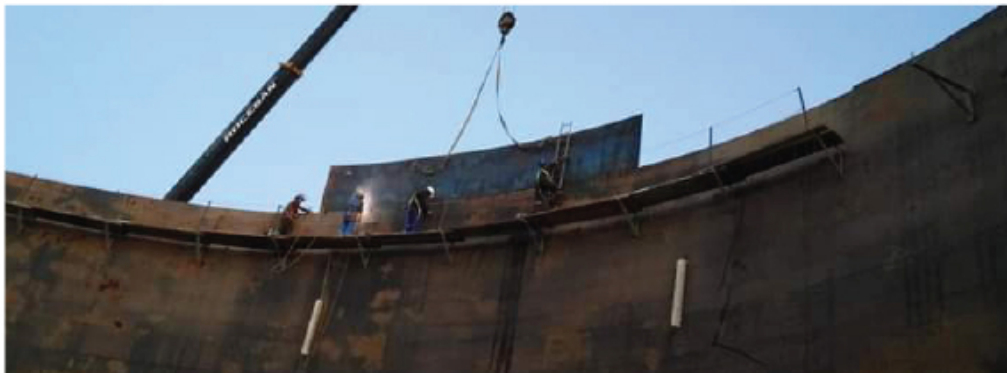


TRIPLE A
ENGINEERING SERVICES

ERECTION TANKS ACCORDING TO API 650 PROJECT

OUR GOAL

- Erection tank with diameter 8 meter and height 12 meter according API 650 Code
- Establishing outer and inner scaffolding
- Ladder around the tank



WHAT WE DO ?

- Prepare risk assessment and method of statement
- install all piping, valves, pumps, Spiral ladder, handrail and Platform for tanks
- Layout for the area with all expected problems (elect lines underground , waterlines ,....etc.)
- Prepare risk assessment, method of statement of lifting plan documentation under supervision of how we will lift every single shell and top on the tank
- Certification of all plate clamp we be used in erection
- Prepare gannet chart ,WPS, PQR ,welder certificate ,workshop drawing of tank , spiral ladder and orientation of nozzles under supervision of mechanical consultant

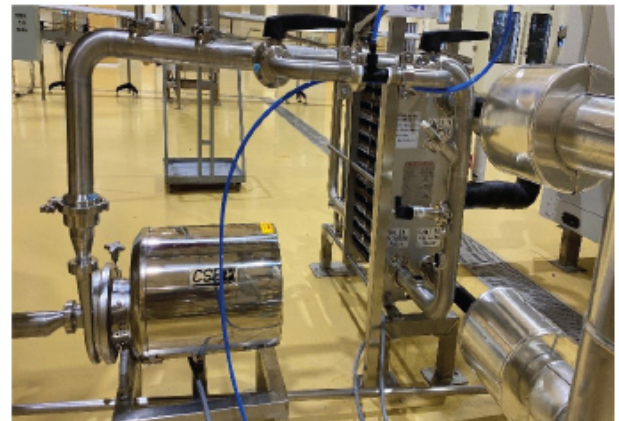


SINGLE AND DOUBLE JACKETED HYGIENIC PIPING PROJECTS

OUR GOAL

Erection Pipelines with different diameter from .5 inch to 6 inch with different lengths according to several codes :

1. EHEDG: European Hygienic Engineering & Design Group
2. ASME (BPE): American society of Mechanical engineering (Bio process Equipment)
3. USFDA: Food and Drug Administration



DESIGN AND MANUFACTURES

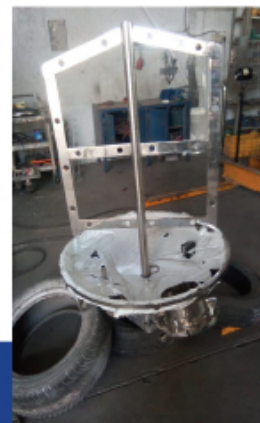
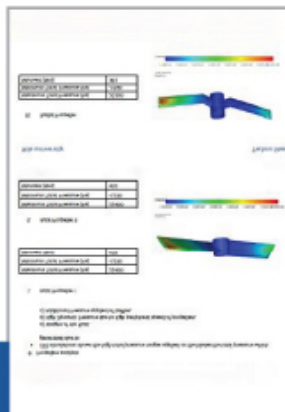
AGITATORS WITH DIFFERENT TYPES

WHAT WE DO

- Design , calculate and simulate every single case it depends of the client requirement with professional engineers or huge corporation
- Choose the best type of impellers or blade
- Saving money all of that reflect of selection of motor , gear motor, thickness and timing

GOAL

- We are of fewer companies take whole package and give you same quality with low cost comparing of imports agitators
- Full testing FAT,SAT, IQ and OQ



CIVIL PROJECTS

We take all Civil items in project

Planning, coordinating to executing of all construction work Such as: (Excavation work .Concrete work, Masonry works Roofing work, Plumbing work, Electrical work, Isolation work,...etc.)



CIVIL PROJECTS

AL ROWAD PHARMACEUTICAL COMPANY



VENTILATION PROJECTS:

- Supply and install black steel pipes and fittings 80,150,250 dn
- Dismantle of the existing exhaust air pipes for the tanks
- Dismantle of the existing exhaust air Fans
- Supply and install cladding with checker plate 6 mm in area (6×6)m+ HEA 180
- Supply and install new Icon ceiling .5 with Segal Beam
- Supply and install new steel Structure for Blower sand for new plate form
- Supply and install 5kw Centrifugal Fan
- test and balance



▶ VENTILATION PROJECTS:



STORAGE TANKS AND DOUBLE JACKET TANKS



▶ STORAGE TANKS AND DOUBLE JACKET TANKS





OUR PRODUCTS



**STAINLESS STEEL & STEEL
HANDRAIL**



**STAINLESS STEEL ROLLER
CONVEYOR**



DECORATION TABLES



TROLLEY



PIPE TROLLEY

OUR PRODUCTS



STAINLESS STEEL TABLES



**STAINLESS STEEL BELT
CONVEYOR**



WAREHOUSE TROLLEY



**SAFETY SHOWER & EYEWASH
STATION WITH ALARM**



INDUSTRY DOORS

OUR CLIENTS





ABOUT US

Quality Design/Build, Incorporated was formed to specialize in the design and build components of construction for both small and large projects. Our mission has evolved, "Guiding our clients through a satisfying design build experience".

Our core value's as a company are honesty, passion, humility, and initiative. We take immense pride in our work and are continuing to discover new and better ways to accomplish our goals of serving our clients and community.

Our clients will have their projects designed according to their desires and within their budget. Additionally, we are able to effectively communicate with all parties involved on our projects – architects, engineers and contractors. As a result, projects are completed 'on time', 'on budget' and according to the intent of the design with proven construction methods.

Our 'Turn-Key' projects can be constructed from a variety of building materials, with basic specifications for all custom designs. With the DESIGN/BUILD method, we are able to minimize time and cost in planning and construction without compromising QUALITY



PROJECT MANAGEMENT

Prepare Pre and Post Tender Consulting

Prepare FEED (EPC, EPCM)

Prepare Budgeting and forecasting.

Prepare Feasibility Studies.

Prepare Preliminary Design Report.

Prepare Scheduling.

Prepare Cost Optimization

Prepare Actual execution of this approved designs

Prepare Commissioning of the project

Prepare scope of work

Prepare BOQ

Prepare confirmation of verbal instruction

Prepare NCR

Prepare RFI (Request for information)

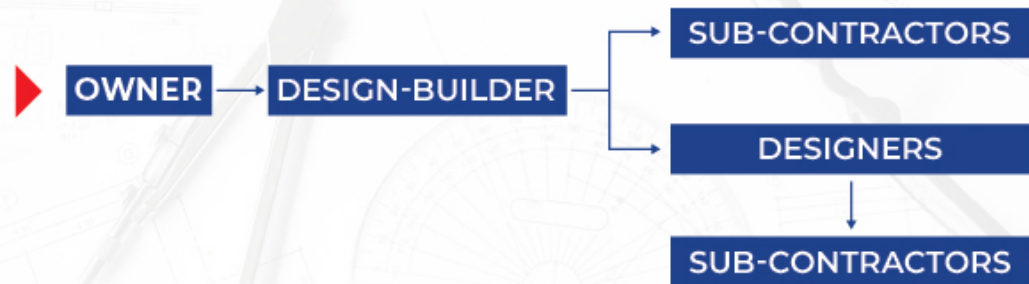


OUR SERVICES :

DESIGN-BUILD CONTRACTUAL RELATIONSHIP

DESIGN-BUILD PROJECT DELIVERY

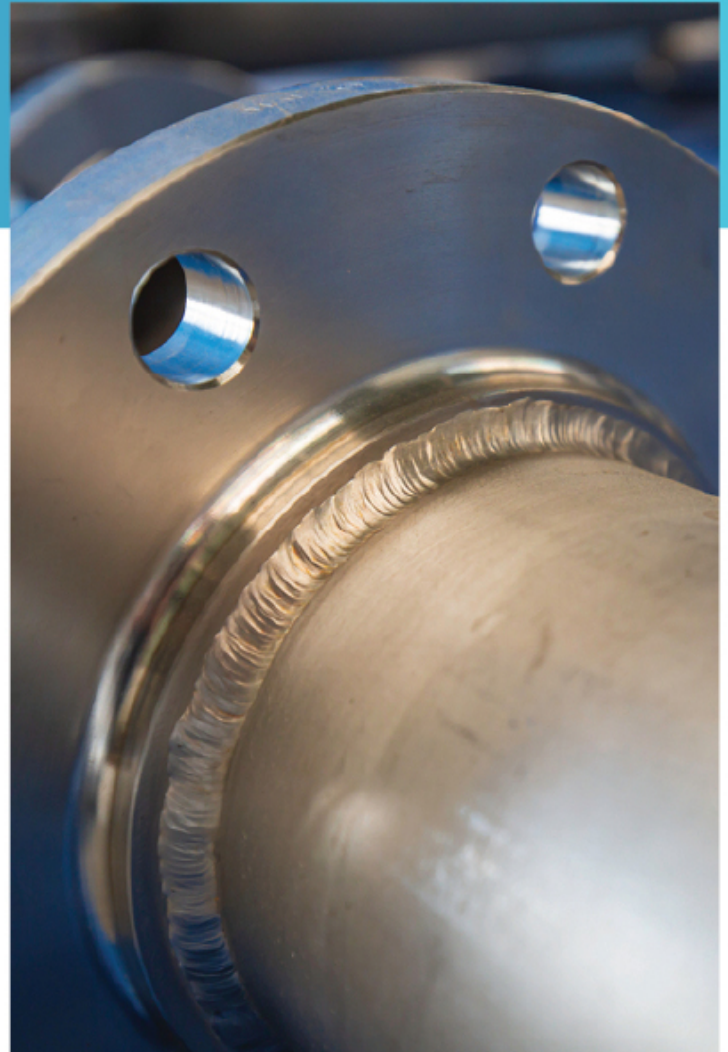
Owner manages only one contract with a single point of responsibility; designer and contractor are on the same team, providing unified recommendations, not excuses.



TRADITIONAL PROJECT DELIVERY

Owner must manage two separate contracts; owner becomes middleman, settling disputes between the designer and the contractor. Designer and contractor can easily blame one another for cost overruns and other problems.





- Prepare, Review and Submit all calibration certificate
- Prepare, Review, Attend and Submit Recovery Test according ASME Bio Process Equipment
- Prepare, Review and Submit Valves data sheet
- Prepare, Review and Submit pressure testing according to ASME code
- Prepare, Review and Submit OQ and IQ
- Prepare, Review, Attend and Submit and FAT and SAT



QUALITY MANAGEMENT

- Prepare, Review and submit test specimens for proposed products and construction .
- Prepare, Review , attend and submit concert pouring and taking test specimens of concert .
- Prepare, Review , Attend and Submit material according ASME SEC II according to design has been approved .
- Prepare, Review, Submit WPS ,PQR according to ASME Section IX .
- Prepare, Review, and Submit ITP .
- Prepare, Review, Attend and Submit welders certificates and test them in site according to ASME Section IX .
- Prepare, Review , Attend and Submit Destructive testing and examination shall be exactly as detailed under Tests for Welder Qualification .
- Prepare, Review ,Attend and Submit Non-destructive testing .
- Prepare, Review, Attend and Submit Surface roughness test according ASME Bio Process Equipment .
- Prepare, Review, Attend and Submit Passivation test according ASME Bio Process Equipment .

CONTACT INFO



01001748988 - 01004740505



info@tripleaes.com



Building 147 Eight Neighborhoods
El-Sheikh Zayed, Giza, Egypt



www.tripleaes.com



SOCIAL CONTACT

COMPANY
PROFILE
2023